

[specifications]

Field of View

- **Stand Position 1**
 - FOV Size (inch) 1.10" x 1.10"
 - Max Code Size (inch) 1.00" x 1.00"
 - Minimum X Dimension 10 mils
- **Stand Position 2**
 - FOV Size (inch) 1.30" x 1.30"
 - Max Code size (inch) 1.20" x 1.20"
 - Minimum X Dimension 15 mils

Physical Characteristics:

- **Stand Dimensions** (with imager in stand):
 - Height: 11.05 inches
 - Width (max): 7.90 inches
 - Depth: 8.25 inches
- Total Weight (stand + imager) is 4.0 lbs

System Requirements:

- Windows® XP SP3 (32 bit), Windows 7 (32 bit/64 bit), Intel® Core™2 Duo Processor, 2GB of RAM, USB port 2.0, Microsoft .NET Framework 3.5 SP1, Microsoft Office Excel, Microsoft internet Explorer, Adobe Reader

Imager Specifications:

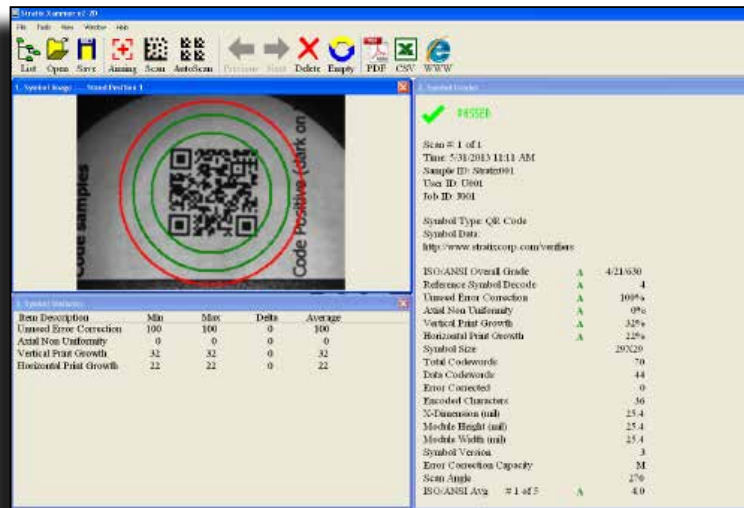
- **Imaging Characteristics:**
 - 1.3 Megapixel imager (1280 x 1024)
 - Light Source: Aiming - 650 nm laser diode, Illumination – 630 nm LED
- **Regulatory Specifications:**
 - Electrical Safety: UL 60950-1, C22.2 No. 60950-1, EN 60950-1, IEC 60950-1
 - Laser Safety: EN 60825-1, IEC 60825-1, 21CFR1040.10
 - EMI/RFI: IEC 60601-1-2, FCC Part 15 Class B, ICES 003 Class B Environmental: RoHS Directive 2002/95/EEC
- **User Environment:**
 - Operating temperature: 32° to 122° F/ 0° to 50° C
 - Storage temperature: -40° to 158° F/40° to 70° C
 - Drop specifications: Withstands multiple 6 ft. (1.8m) drops to concrete
 - Environmental sealing: IP41
- **Warranty:**
 - 5 years (60 months) from the date of shipment



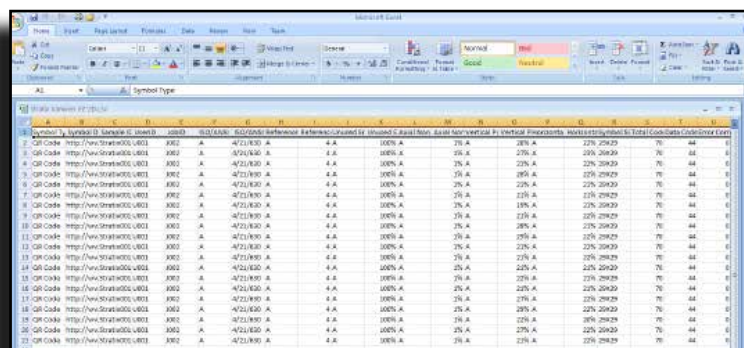
Features

- Most affordable 2D verifier on the market
- PC Based Verification Solution
- Symbologies Supported – QR Code and Data Matrix (ECC-200)
- Partial ISO/IEC Grading (ISO/IEC 16022, ISO/IEC 15415, ISO/IEC 15426-2, ISO/IEC 18004)
- Calibrated to GS1 Data Matrix Calibrated Conformance Standard Test Card (NIST Traceable)

Software Screen Shot:



Excel Report:



Xaminer eZ-2D Verifier Package Includes:

Carry Case, Imager & USB Interface Cable, Stand, Calibration Files CDI, Verifier Software & Scanner Driver CD2, Installation Guide, Product Reference Guide, 2D Calibration Check Card & Certificate of Calibration

Stratix Symbol Verification Report

Scan #: 3 of 5

Passed

Time: 6/12/2013 10:47 AM

Sample ID: Stratix001

User ID: U001

Job ID: J001

Symbol Type: QR Code

Symbol Data:

<http://www.stratixcorp.com/verifiers>

[URL Link](#)



ISO/ANSI Overall Grade	A	4/20/630
Reference Symbol Decode	A	4
Unused Error Correction	A	100%
Axial Non Uniformity	A	1%
Vertical Print Growth	A	28%
Horizontal Print Growth	A	10%
Symbol Size		29X29
Total Codewords		70
Data Codewords		44
Error Corrected		0
Encoded Characters		36
X-Dimension (mil)		25.9
Module Height (mil)		25.9
Module Width (mil)		26.1
Symbol Version		3
Error Correction Capacity		M
Scan Angle		269
ISO/ANSI Avg	# 3 of 5	A 4.0

